

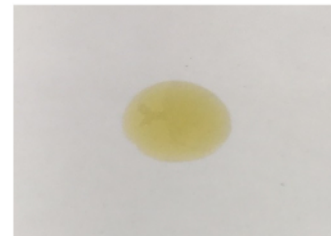
CERTIFICATE OF ANALYSIS No.: 2021-4031

CLIENT

Green Doctor Belgium, 3, Rue Joly
7640 Antoing, Belgium

SAMPLE






GREEN DROPS CBD 6%



Sample condition: SUITABLE
Sample ID: 2111140
Sample type: Viscous liquid
Batch No.: DR06621035A

Work order: 2021-104930
Analysis ID: 2021_067
Method ID: PHL_RPC_12C
Method SOP: MET-002

Sample received: 22/03/2021
Start of analysis: 23/03/2021
End of analysis: 24/03/2021
Analyst: Janez Gerdenc

CANNABINOID PROFILE	Concentration [% w/w]	Expanded uncertainty [% w/w]	Graphic presentation of relative cannabinoid concentration
CBDV - Cannabidivarin	1.315	0.066	
CBDA - Cannabidiolic acid	0.0363	0.0083	
CBGA - Cannabigerolic acid	< LOQ	n/a	
CBG - Cannabigerol	0.106	0.026	
CBD - Cannabidiol	6.66	0.33	
THCV - Tetrahydrocannabivarin	0.161	0.026	
CBN - Cannabinol	< LOQ	n/a	
CBC - Cannabichromene	< LOQ	n/a	
THC - Δ-9-Tetrahydrocannabinol	< LOQ	n/a	
THCA - Δ-9-Tetrahydrocannabinolic acid	< LOQ	n/a	
8-THC - Δ-8-Tetrahydrocannabinol *	< LOQ	n/a	
CBL - Cannabicyclol *	< LOQ	n/a	

The results marked by * relate to non-accredited activity.

Units and abbreviations: % w/w = weight percent, < LOQ = below the limit of quantitation (0.03 % w/w), ND = not detected, n/a = not available.


The results given herein apply only to the sample as received. Expanded Uncertainty was calculated using coverage factor $k = 2$, corresponding to a double standard uncertainty and characterizes the interval value in which it is possible to expect the real value with a probability of 95%. This is stated according to the ISO/IEC Guide 98-3.

Total or partial reproduction of this document is not allowed without the permit from PharmaHemp d.o.o. The document does not substitute any other legal document.

Date issued:

25/03/2021

Approved by:



mag. Marko Dragan
Analytical Laboratory Manager

Authorized by:



dr. Boštjan Jančar
Chief Technology Officer

End of Certificate