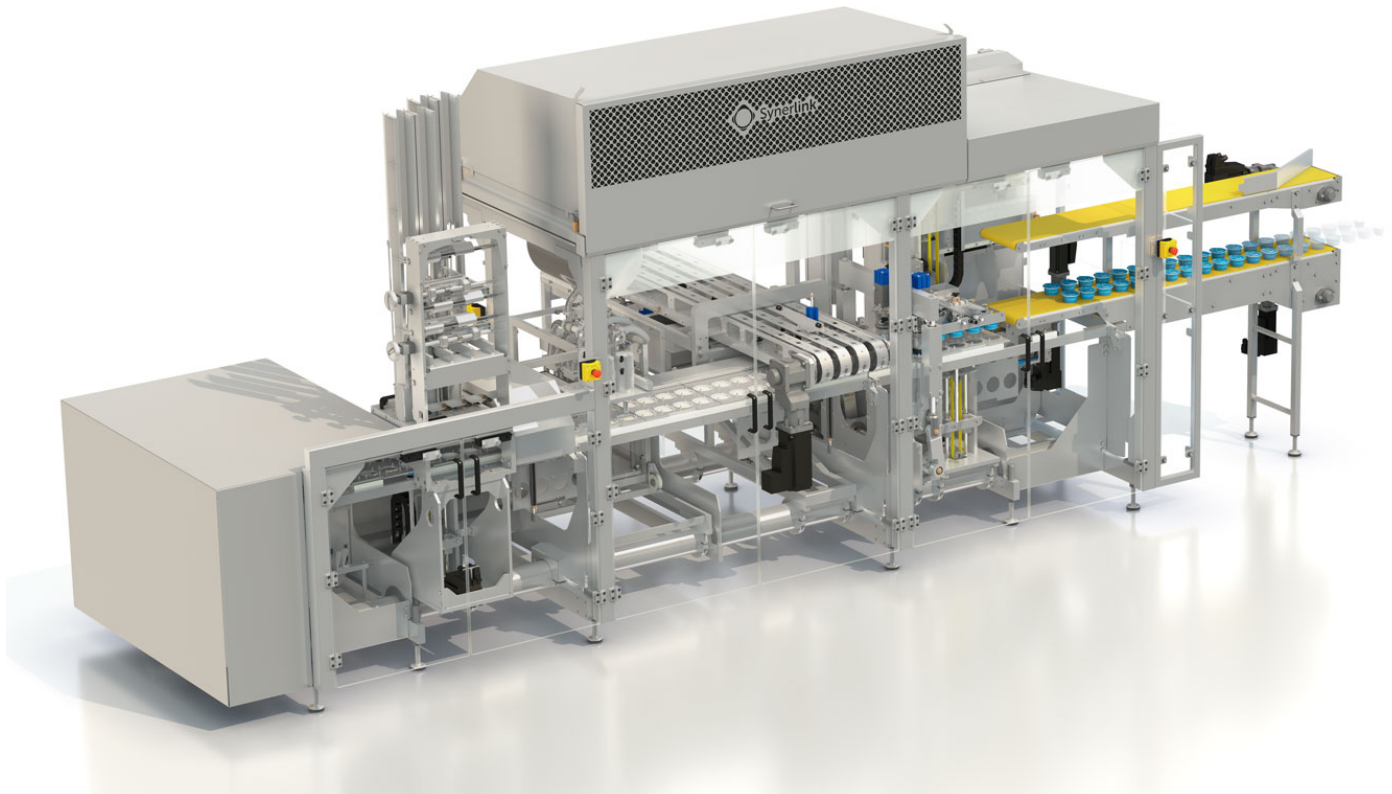


# New Generation of Cup Filling Machine

**(versatech)**  
endless flexibility



## Versatech Innovations

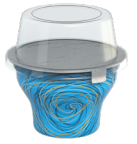
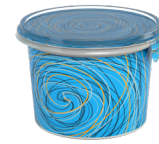
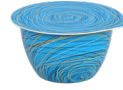
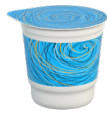
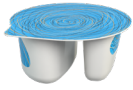
- Modular design & functions
- Super quick change-over
- Chainless innovative motion
- Editable hardware for future evolutions
- Speed: 9,600 cups per hour (up to 12,000)

## Versatech Strengths

- Efficient maintenance
- Augmented ergonomics
- Packaging versatility
- Clean design
- Customizable Hygiene (from clean to ultra clean)

## Versatech Partners





## Modular Design & Functions

- Each module is plug-and-play via a centralized cabling network
- Through the system's unified plug-and-play network, each module will automatically integrate with the rest of the system (pneumatic and electric)
- Indexed position of the modules allows for simple placement and calibration (positioning accuracy of 0.1mm)

## Super Quick Changeover for Fast Change in Production

- Super quick automatic loading and unloading of slats
- Format changeovers from 40-150mm diameter and heights up to 160mm

## Chainless Innovative Motion for Improved Maintenance & Accessibility

- Chainless design simplifies maintenance and increases hygiene safety
- Fast-return system reduces the number of slats required, simplifying changeover and accessibility

## Designed for Future Evolution

- Designed to grow with your business
- Versatech secures future operations, allowing you to add, remove or reconfigure modules as your business evolves
- Customize your line with modules for any function

## Conceived for Efficient Maintenance

- Chainless design with no lubrication
- Servo motor with integrated drive allows to reduce machine downtime near to zero by simply replacing it in case of issues
- Easy disassembly and reassembly for efficient maintenance operations

## Augmented Ergonomics for Cups and Lids

- Loading at chest height
- Loading while machine is running
- Dedicated table for empty containers or boxes: optimizes the operator's movements

## Packaging Versatility Trough a Wide Variety of Production Batches

- No preset diameters, can handle any dimensions from Ø40mm to Ø150mm
- Fast format changeover: less than 20min from last to first container (manual or automatic)
- Delivery time for a new format tool set: 1 month

## Designed for Easy Cleaning

- Designed with a strong focus on hygiene and cleanability
- Conceived for fast and efficient cleaning
- Removeable slats for easy manual cleaning without tools

